

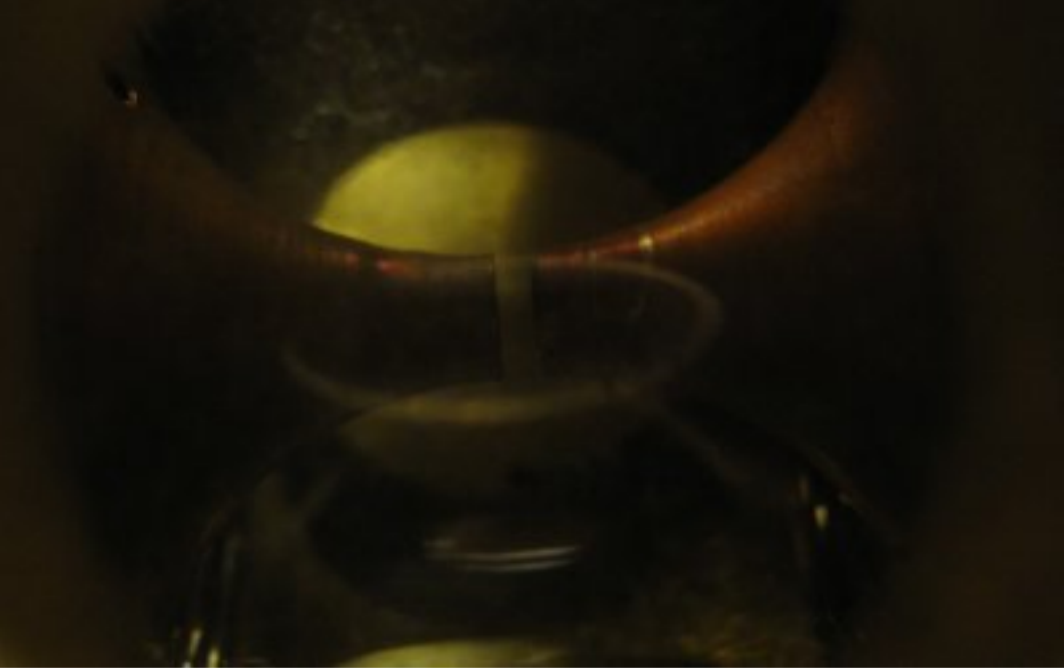


REL8B reflex klystron



This valve measures 170x47mm overall (65x26mm across the cavity) and has a 4 pin base

Information is needed about this valve



8B
 REL
 R
 CANADA FOR ENTERPRISES LTD
 BY RADIO TUBES LTD CANADA



¹²
TYPE 8 *B*
SER. No. *5077*

MADE IN CANADA FOR
RESEARCH ENTERPRISES Ltd.
BY
ROGERS RADIO TUBES Ltd.
TORONTO CANADA

R.E.L. ORDER No. *A 35097*
R.E.L. REQ. No. *Z 7858*

R.R.T.L.
INSPECTOR

R.E.L.
INSPECTOR

34

